



## Scaffalature Shelves



# Scaffalature con divisori

## *Shelves with partitions*

Scaffalature con divisori mobili in lamiera zincata dotati di ferma divisori in plastica che eliminano le vibrazioni.

Shelves with movable partitions in galvanized sheet metal, with plastic fastening that eliminate vibrations.

### Scaffalature con divisori mobili

*Shelves with movable partitions*

**h. 161 mm**



Codice / Code	Dimensioni / Dimensions	Peso / Weight
GECO-542716-SDM	mm. 533 x 270 x 161	4 kg
GECO-802716-SDM	mm. 799 x 270 x 161	5 kg
GECO-162716-SDM	mm. 1066 x 270 x 161	6.7 kg
GECO-132716-SDM	mm. 1332 x 270 x 161	8 kg

### Scaffalature con divisori mobili

*Shelves with movable partitions*

**h. 242 mm**



#### Profondità 270 mm / Depth 270 mm

Codice / Code	Dimensioni / Dimensions	Peso / Weight
GECO-542724-SDM	mm. 533 x 270 x 242	6.8 kg
GECO-802724-SDM	mm. 799 x 270 x 242	7.8 kg
GECO-162724-SDM	mm. 1066 x 270 x 242	7.5 kg
GECO-132724-SDM	mm. 1332 x 270 x 242	8.8 kg

#### Profondità 310 mm / Depth 310 mm

Codice / Code	Dimensioni / Dimensions	Peso / Weight
GECO-543124-SDM	mm. 533 x 310 x 242	5.8 kg
GECO-803124-SDM	mm. 799 x 310 x 242	6.2 kg
GECO-163124-SDM	mm. 1066 x 310 x 242	8.5 kg
GECO-133124-SDM	mm. 1332 x 310 x 242	9.9 kg

#### Profondità 357 mm / Depth 357 mm

Codice / Code	Dimensioni / Dimensions	Peso / Weight
GECO-543624-SDM	mm. 533 x 357 x 242	5.5 kg
GECO-803624-SDM	mm. 799 x 357 x 242	7.4 kg
GECO-163624-SDM	mm. 1066 x 357 x 242	9.1 kg
GECO-133624-SDM	mm. 1332 x 357 x 242	10.4 kg

**Scaffalature con divisori mobili**  
*Shelves with movable partitions*

**h. 385 mm**



**Profondità 270 mm / Depth 270 mm**

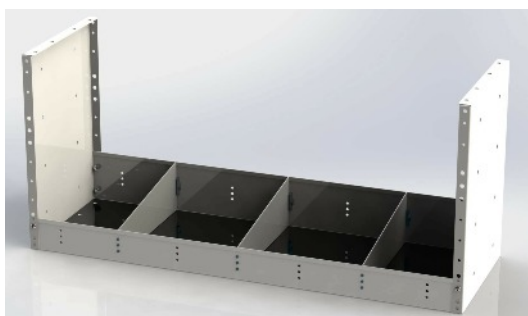
Codice / Code	Dimensioni / Dimensions	Peso / Weight
GECO-542739-SDM	mm. 533 x 270 x 385	6.2 kg
GECO-802739-SDM	mm. 799 x 270 x 385	7.7 kg
GECO-162739-SDM	mm. 1066 x 270 x 385	8.9 kg
GECO-132739-SDM	mm. 1332 x 270 x 385	8.2 kg

**Profondità 357 mm / Depth 357 mm**

Codice / Code	Dimensioni / Dimensions	Peso / Weight
GECO-543639-SDM	mm. 533 x 357 x 385	7.5 kg
GECO-803639-SDM	mm. 799 x 357 x 385	9.4 kg
GECO-163639-SDM	mm. 1066 x 357 x 385	11.1 kg
GECO-133639-SDM	mm. 1332 x 357 x 385	12.4 kg

**Scaffalature con divisori mobili**  
*Shelves with movable partitions*

**h. 485 mm**



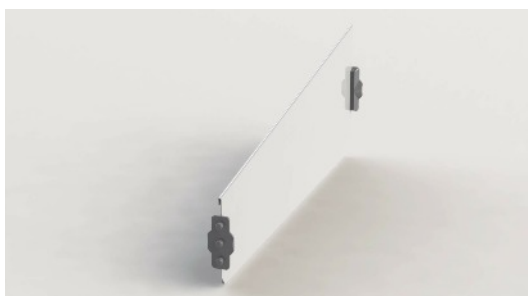
**Profondità 270 mm / Depth 270 mm**

Codice / Code	Dimensioni / Dimensions	Peso / Weight
GECO-542749-SDM	mm. 533 x 270 x 485	7.3 kg
GECO-802749-SDM	mm. 799 x 270 x 485	8.8 kg
GECO-162749-SDM	mm. 1066 x 270 x 485	10 kg
GECO-132749-SDM	mm. 1332 x 270 x 485	11.3 kg

**Profondità 357 mm / Depth 357 mm**

Codice / Code	Dimensioni / Dimensions	Peso / Weight
GECO-543649-SDM	mm. 533 x 357 x 485	8.7 kg
GECO-803649-SDM	mm. 799 x 357 x 485	10.6 kg
GECO-163649-SDM	mm. 1066 x 357 x 485	12.3 kg
GECO-133649-SDM	mm. 1332 x 357 x 485	13.6 kg

**Divisori per scaffalature**  
*Shelves partitions*



Codice / Code	Dimensioni / Dimensions
SPN-ALDV-007-AA	mm. 270 x 60 x 130
SPN-ALDV-004-AA	mm. 270 x 80 x 130
SPN-ALDV-005-AA	mm. 310 x 80 x 130
SPN-ALDV-006-AA	mm. 357 x 80 x 130

# Scaffalature con vaschette

## *Shelves with plastic boxes*

Scaffalature con vaschette in plastica asportabili disponibili in due grandezze  
Shelving with movable plastic boxes available of two sizes

### Scaffalature con contenitori in plastica M27

*Shelves with plastic boxes M27*

**h. 161 mm**



Codice / Code	Dimensioni / Dimensions	Peso / Weight
GECO-802716-SCP	mm. 799 x 270 x 161	4 kg
GECO-162716-SCP	mm. 1066 x 270 x 161	5 kg
GECO-132716-SCP	mm. 1332 x 270 x 161	5.7 kg

### Scaffalature con contenitori in plastica M27

*Shelves with plastic boxes M27*

**h. 242 mm**

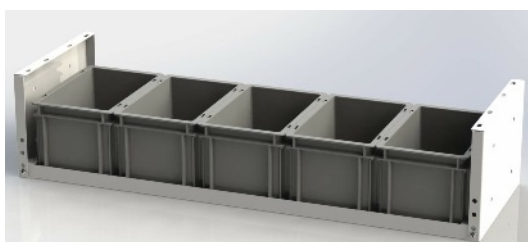


Codice / Code	Dimensioni / Dimensions	Peso / Weight
GECO-802724-SCP	mm. 799 x 270 x 242	4.8 kg
GECO-162724-SCP	mm. 1066 x 270 x 242	5.8 kg
GECO-132724-SCP	mm. 1332 x 270 x 242	6.5 kg

### Scaffalature con contenitori in plastica M35

*Shelves with plastic boxes M35*

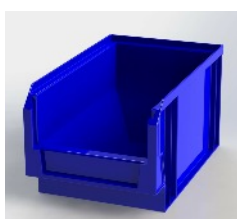
**h. 242 mm**



Codice / Code	Dimensioni / Dimensions	Peso / Weight
GECO-803624-SCP	mm. 799 x 357 x 242	6.4 kg
GECO-163624-SCP	mm. 1066 x 357 x 242	7.4 kg
GECO-133624-SCP	mm. 1332 x 357 x 242	8.4 kg

### Contenitori in plastica per scaffalature e terminali

*Plastic boxes for shelves and top shelves*



M27



M35

Codice / Code	Dimensioni / Dimensions
SPN-ALCP-007-AA (Mod. M27)	mm. 145 x 230 x 125
SPN-ALCP-006-AA (Mod. M35)	mm. 200 x 300 x 170

# Scaffalature terminali con divisori

## *Top shelves with partitions*

Scaffalature terminali con divisori mobili in lamiera zincata dotati di ferma divisori in plastica che eliminano le vibrazioni.

Top shelves with movable partitions in galvanized sheet metal, with plastic fastening that eliminate vibrations.

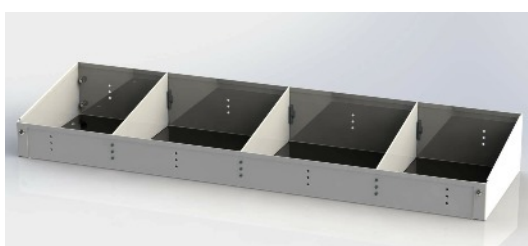
**Scaffalature terminali con divisori mobili**  
*Top shelves with movable partitions*

**h. 130 mm**



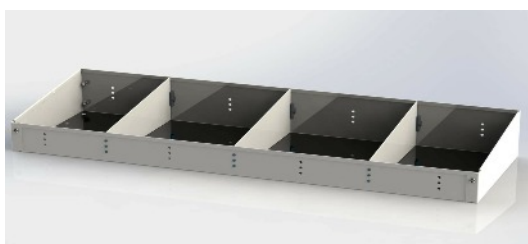
**Profondità 270 mm / Depth 270 mm**

Codice / Code	Dimensioni / Dimensions	Peso / Weight
GECO-542713-STM	mm. 533 x 270 x 130	2.8 kg
GECO-802713-STM	mm. 799 x 270 x 130	4.3 kg
GECO-162713-STM	mm. 1066 x 270 x 130	5.5 kg
GECO-132713-STM	mm. 1332 x 270 x 130	6.8 kg



**Profondità 310 mm / Depth 310 mm**

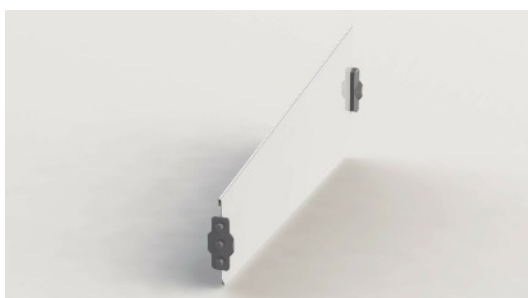
Codice / Code	Dimensioni / Dimensions	Peso / Weight
GECO-543113-STM	mm. 533 x 310 x 130	3.6 kg
GECO-803113-STM	mm. 799 x 310 x 130	4 kg
GECO-163113-STM	mm. 1066 x 310 x 130	6.3 kg
GECO-133113-STM	mm. 1332 x 310 x 130	7.6 kg



**Profondità 357 mm / Depth 357 mm**

Codice / Code	Dimensioni / Dimensions	Peso / Weight
GECO-543613-STM	mm. 533 x 357 x 130	3 kg
GECO-803613-STM	mm. 799 x 357 x 130	4.9 kg
GECO-163613-STM	mm. 1066 x 357 x 130	6.6 kg
GECO-133613-STM	mm. 1332 x 357 x 130	7.9 kg

**Divisori per scaffalature**  
*Shelves partitions*



Codice / Code	Dimensioni / Dimensions
SPN-ALDV-004-AA	mm. 270 x 80 x 130
SPN-ALDV-005-AA	mm. 310 x 80 x 130
SPN-ALDV-006-AA	mm. 357 x 80 x 130

# Scaffalature terminali con vaschette

## *Top shelves with plastic boxes*

Scaffalature terminali con vaschette in plastica asportabili disponibili in due grandezze

Top shelves with movable plastic boxes available of two sizes

### Scaffalature terminali con contenitori in plastica M27

**h. 125 mm**

*Top shelves with plastic boxes M27*



Codice / Code	Dimensioni / Dimensions	Peso / Weight
GECO-802712-STP	mm. 799 x 270 x 125	2 kg
GECO-162712-STP	mm. 1066 x 270 x 125	3 kg
GECO-132712-STP	mm. 1332 x 270 x 125	3.7 kg

### Scaffalature terminali con contenitori in plastica M35

**h. 170 mm**

*Top shelves with plastic boxes M35*



Codice / Code	Dimensioni / Dimensions	Peso / Weight
GECO-803617-STP	mm. 799 x 357 x 170	3 kg
GECO-163617-STP	mm. 1066 x 357 x 170	4 kg
GECO-133617-STP	mm. 1332 x 357 x 170	5 kg

### Contenitori in plastica per scaffalature e terminali

*Plastic boxes for shelves and top shelves*



M27

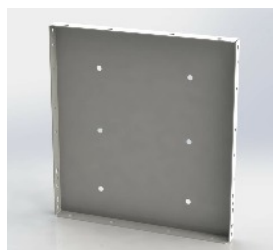


M35

Codice / Code	Dimensioni / Dimensions
SPN-ALCP-007-AA (Mod. M27)	mm. 145 x 230 x 125
SPN-ALCP-006-AA (Mod. M35)	mm. 200 x 300 x 170

### Spalle per basi e scaffalature

*Sides for wheelbases and shelves*



Codice / Code	Dimensioni / Dimensions	Codice / Code	Dimensioni / Dimensions
GECO-270242-SBS	mm. 270 x 242	GECO-357485-SBS	mm. 357 x 485
GECO-270385-SBS	mm. 270 x 385	GECO-270161-SBS	mm. 270 x 161
GECO-270485-SBS	mm. 270 x 485	GECO-310242-SBS	mm. 310 x 242
GECO-357242-SBS	mm. 357 x 242	GECO-3639SX-SBS	mm. 357 x 385 (SX)
GECO-357385-SBS	mm. 357 x 385	GECO-3639DX-SBS	mm. 357 x 385 (DX)